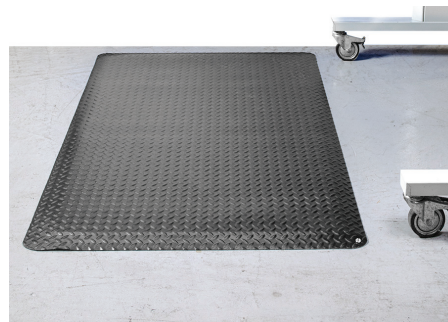
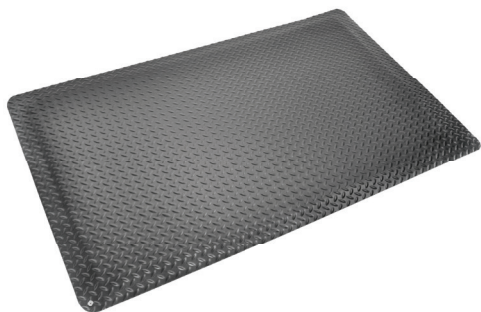




Material Specifications

5700 Series Mats



5700 Series Conductive Mat Specifications

Physical Properties	Typical Values
Thickness	9/16 Inch
Compound	Vinyl Surface with Nitricell Sponge Base
Uses	Areas at risk from Static Electricity
Flammability	"A" Rating per MVSS 302
Color	Black
Compression	.415 Inches at 35 PSI (ASTM D575)
Tabor Abrasion	1% Loss at 1000 cycles (Fed Std 191)
Electrical Properties	Typical Values
Resistance Top to Top	1×10^8 to $10 \times 8 \times 10^6$
Resistance to Ground	1×10^8 to $10 \times 8 \times 10^6$
Coefficient of Friction	.68 Dry (ASTM F1677)